

PERFORMANCE

Processor

Intel® Core™ i7-1165G7 (4C / 8T, 2.8 / 4.7GHz, 12MB)

Graphics

Integrated Intel® Iris® Xe Graphics

Chipset

Intel® SoC Platform

Memory

12GB Soldered DDR4-3200

Memory Slots

Memory soldered to systemboard, no slots, dual-channel

Max Memory

12GB soldered memory, not upgradable

Storage

512GB SSD M.2 2242 PCIe® 3.0x4 NVMe®

Storage Support^[1]

One drive, up to 512GB M.2 2242 SSD or 1TB M.2 2280 SSD

Storage Slot

One M.2 2280 PCIe® 3.0 x4 slot

Card Reader

None

Optical

None

Audio Chip

High Definition (HD) Audio

Speakers

Stereo speakers, 2W x2, optimized with Dolby® Atmos®

Camera

HD 720p with Privacy Shutter

Microphone

2x, Array

Battery^[2]

Integrated 71Wh

Max Battery Life^[3]

MobileMark® 2014: 19.7 hr

MobileMark® 2018@200nits: 12 hr

Local video (1080p) playback@150nits: 19.05 hr

Power Adapter^[4]

65W USB-C® (3-pin)

DESIGN

Display^{[5][6]}

15.6" FHD (1920x1080) IPS 300nits Glossy, 100% sRGB, AGC Soda-lime Glass, Touch

Touchscreen

10-point Multi-touch

Keyboard

Backlit, English (US)

Case Color

Dark Moss

Surface Treatment

Aluminium Stamping (Anodized)

Case Material

Aluminium (Top), Aluminium (Bottom)

Pen^[7]

Pen Upgradable (Purchase Separately)

Dimensions (WxDxH)^[8]

356.46 x 235.65 x 17.97 mm (14.03 x 9.27 x 0.70 inches)

Weight^[9]

Starting at 1.9 kg (4.19 lbs)

SOFTWARE

Operating System^[10]

Windows® 11 Home, English

Bundled Software

Office Trial

CONNECTIVITY

Ethernet

No Onboard Ethernet

WLAN + Bluetooth^{[11][12]}

Wi-Fi® 6, 11ax 2x2 + BT5.1

WWAN

None

NFC

None

Standard Ports

- 1x USB 3.2 Gen 1
- 1x USB 3.2 Gen 1 (Always On)
- 2x Thunderbolt™ 4 / USB4® 40Gbps (support data transfer, Power Delivery 3.0 and DisplayPort™ 1.4)
- 1x Headphone / microphone combo jack (3.5mm)

Monitor Cable

None

SECURITY & PRIVACY

Security Chip

Firmware TPM 2.0

Fingerprint Reader

Touch Style, on Palm Rest

Other Security

Camera privacy shutter

SERVICE

Base Warranty

1-year, Courier or Carry-in

Included Upgrade

<= 3 Months Premium Care (5WS1E21232)

ACCESSORIES

Bundled Accessories

None

CERTIFICATIONS

Green Certifications

- ENERGY STAR® 8.0
- ErP Lot 3
- RoHS compliant

Other Certifications

Intel® Evo™ Platform

MODEL

TopSeller : No

Announce Date : 2021-10-05

EAN / UPC / JAN : 195891978849

End of Support : 2026-11-14



Product image is a sample, it may not match the real color of this model

Note:

[1] The storage capacity supported is based on the test results with current Lenovo storage offerings. The system may support larger storage as the technology develops.

[2] Rapid Charge Express is only effective in hibernates or.....

· Lenovo reserves the right to change specifications without notice.

· California Electronic Waste Recycling Fee In California, per state law, Lenovo charges an electronic waste recycling fee on this covered device at the time of sale of the product. For more information, go to: <https://www.calrecycle.ca.gov/Electronics/Consumer>

To see more note information, please link to

<https://psref.lenovo.com/Detail/1391?M=82BJ007WUS>

Premium Care - Advanced Support from Real People. Real Fast.



REAL PERSON

Choose how you want to reach us - through the phone, chat or email - our expert technicians will take care of you.



REAL FAST

Highly trained technicians will provide you real-time solutions, whatever the issue, on your first contact. If needed, our team will schedule an onsite visit for the next business day.



HASSLE FREE

'Getting started' and 'how-to' assistance for hardware and software. Easy solutions that are simple to reach - that's how Premium Care delivers you the ideal support experience.



PC HEALTH CHECK

Free annual PC Health Check that allows our experts to spot issues before you do so they can resolve them quickly and help you avoid PC problems.

Accidental Damage Protection - Protection of your PC from the unexpected.

Experience shows that a significant portion of devices may be damaged (and not covered under warranty) in the first three years. Lenovo's Accidental Damage Protection service covers accidents beyond the system warranty such as drops, spills, bumps and even electrical surges. Make sure your new device has maximum protection, avoid unplanned costs and get peace of mind.

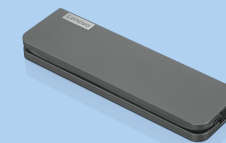
Base Warranty – Included with the systems you purchase, default 1- or 3-year coverage window.

Warranty Extensions & Upgrades – Service and protection that's right for your circumstances.

- Pick Up & Return Courier
- Onsite Support
- Technician Installed Customer
- Replaceable Unit Service
- International Warranty Upgrade

Lenovo may not offer the products, services or features discussed in this document in all regions. Lenovo may withdraw an offering at any time. Consult your local representative for information on offerings available in your area. Lenovo reserves the right to change specifications or other product information without notice. Lenovo is not responsible for photographic or typographical errors. Lenovo provides this publication "as is" without warranty of any kind, either express or implied, including the implied warranties of merchantability or fitness for a particular purpose.

Recommended Accessories



Lenovo USB-C Mini Dock_US

40AU0065US

Expand Your Potential with An Universal Mini Dock; Lenovo understands that modern business depends on a wide variety of PC's and even brands to meet their business needs. To make this easier Lenovo USB-C Mini dock is ...



Lenovo Powered USB-C Travel Hub

4X90S92381

Travel-Ready Productivity Powerhouse; One-stop travel docking is finally here. Connect and charge new and legacy devices wherever you happen to be. Sleek and compact, the Lenovo Powered USB-C Travel Hub fits unlimited...

For a full list of accessories and services, please visit:
<https://smartfind.Lenovo.com>

Lenovo

PSREF
Product Specifications
Reference