

## PERFORMANCE

### Processor

Intel® Core™ i7-13700H, 14C (6P + 8E) / 20T, P-core 2.4 / 5.0GHz, E-core 1.8 / 3.7GHz, 24MB

### Graphics

NVIDIA® GeForce RTX™ 4050 6GB GDDR6

### Chipset

Intel SoC Platform

### Memory

16GB Soldered LPDDR5-5200

### Memory Slots

Memory soldered to systemboard, no slots, dual-channel

### Max Memory

16GB soldered memory, not upgradable

### Storage

512GB SSD M.2 2242 PCIe® 4.0x4 NVMe®

### Storage Support<sup>(1)</sup>

Up to two drives, 2x M.2 SSD

- M.2 2242 SSD up to 1TB
- M.2 2280 SSD up to 1TB

### Storage Slot

Two M.2 slots

- One M.2 2242 PCIe 4.0 x4 slot
- One M.2 2280 PCIe 4.0 x4 slot

### Card Reader

4-in-1 Card Reader

### Optical

None

### Audio Chip

High Definition (HD) Audio, Realtek® ALC3287 codec

### Speakers

Stereo speakers, 2W x2, optimized with Dolby® Atmos®

### Camera

FHD 1080p + IR with Privacy Shutter, ToF Sensor

### Microphone

2x, Array

### Battery<sup>(2)</sup>

Integrated 75Wh

### Power Adapter

170W Slim Tip (3-pin)

## DESIGN

### Display<sup>(3)</sup>

16" 2.5K (2560x1600) IPS 350nits Anti-glare, 100% sRGB, 120Hz, Eyesafe®, G-Sync

### Touchscreen

None

### Keyboard

Backlit, Arabic

### Case Color

Arctic Grey

### Surface Treatment

Aluminium Stamping (Anodized with Sandblasting)

### Case Material

Aluminium (Top), Aluminium (Bottom)

### Dimensions (WxDxH)<sup>(4)</sup>

356 x 251 x 17.5 mm (14.02 x 9.88 x 0.69 inches)

### Weight<sup>(5)</sup>

Starting at 1.95 kg (4.30 lbs)

## SOFTWARE

### Operating System

None

### Bundled Software

None

## CONNECTIVITY

### Ethernet

No Onboard Ethernet

### WLAN + Bluetooth<sup>(6)(7)</sup>

Wi-Fi® 6E, 11ax 2x2 + BT5.1

### Standard Ports

- 1x USB 3.2 Gen 1
- 1x USB 3.2 Gen 1 (Always On)
- 1x USB-C® 3.2 Gen 2 (support data transfer, Power Delivery 3.0 and DisplayPort™ 1.4)
- 1x Thunderbolt™ 4 / USB4® 40Gbps (support data transfer, Power Delivery 3.0 and DisplayPort 1.4)
- 1x HDMI® 2.1, up to 4K/60Hz
- 1x Card reader
- 1x Headphone / microphone combo jack (3.5mm)
- 1x Power connector

### Monitor Cable

None

## SECURITY & PRIVACY

### Security Chip

Firmware TPM 2.0 Enabled

### Fingerprint Reader

None

### Other Security

- Camera privacy shutter
- IR camera for Windows® Hello

## SERVICE

### Base Warranty

1-year, Courier or Carry-in

### Included Upgrade

2Y Courier/Carry-in upgrade from 1Y Courier/Carry-in

## ACCESSORIES

### Bundled Accessories

None

## CERTIFICATIONS

### Green Certifications

- ErP Lot 6
- ErP Lot 26
- RoHS compliant

### Other Certifications

- Eyesafe® Certified 2.0
- TÜV Rheinland® Low Blue Light (Hardware Solution)

### Mil-Spec Test

MIL-STD-810H military test passed (21 test items)

## MODEL

<b>TopSeller</b>	: Yes	<b>Announce Date</b>	: 2023-03-29
<b>EAN / UPC / JAN</b>	: 196804587998	<b>End of Support</b>	: 2029-03-20



Product image is a sample, it may not match the real color of this model  
Note:

<sup>(1)</sup> The storage capacity supported is based on the test.....  
· Lenovo reserves the right to change specifications without notice.

To see more note information, please link to  
<https://psref.lenovo.com/Detail/2170?M=83AQ0029AX>

## Premium Care - Advanced Support from Real People. Real Fast.



### REAL PERSON

Choose how you want to reach us - through the phone, chat or email - our expert technicians will take care of you.



### REAL FAST

Highly trained technicians will provide you real-time solutions, whatever the issue, on your first contact. If needed, our team will schedule an onsite visit for the next business day.



### HASSLE FREE

'Getting started' and 'how-to' assistance for hardware and software. Easy solutions that are simple to reach - that's how Premium Care delivers you the ideal support experience.



### PC HEALTH CHECK

Free annual PC Health Check that allows our experts to spot issues before you do so they can resolve them quickly and help you avoid PC problems.

## Accidental Damage Protection - Protection of your PC from the unexpected.

Experience shows that a significant portion of devices may be damaged (and not covered under warranty) in the first three years. Lenovo's Accidental Damage Protection service covers accidents beyond the system warranty such as drops, spills, bumps and even electrical surges. Make sure your new device has maximum protection, avoid unplanned costs and get peace of mind.

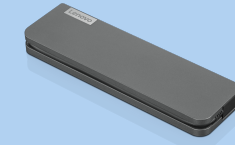
## Base Warranty – Included with the systems you purchase, default 1- or 3-year coverage window.

## Warranty Extensions & Upgrades – Service and protection that's right for your circumstances.

- Pick Up & Return Courier
- Onsite Support
- Technician Installed Customer
- Replaceable Unit Service
- International Warranty Upgrade

Lenovo may not offer the products, services or features discussed in this document in all regions. Lenovo may withdraw an offering at any time. Consult your local representative for information on offerings available in your area. Lenovo reserves the right to change specifications or other product information without notice. Lenovo is not responsible for photographic or typographical errors. Lenovo provides this publication "as is" without warranty of any kind, either express or implied, including the implied warranties of merchantability or fitness for a particular purpose.

## Recommended Accessories



### Lenovo USB-C Mini Dock\_US

40AU0065US

Expand Your Potential with An Universal Mini Dock; Lenovo understands that modern business depends on a wide variety of PC's and even brands to meet their business needs. To make this easier Lenovo USB-C Mini dock is ...



### Lenovo Powered USB-C Travel Hub

4X90S92381

Travel-Ready Productivity Powerhouse; One-stop travel docking is finally here. Connect and charge new and legacy devices wherever you happen to be. Sleek and compact, the Lenovo Powered USB-C Travel Hub fits unlimited...

For a full list of accessories and services, please visit:  
<https://smartfind.Lenovo.com>

Lenovo

PSREF  
Product Specifications  
Reference