

PERFORMANCE

Processor

Intel® Core™ i7-11370H (4C / 8T, 3.3 / 4.8GHz, 12MB)

Graphics

NVIDIA® GeForce MX450 2GB GDDR6

Chipset

Intel SoC Platform

Memory

16GB Soldered DDR4-3200

Memory Slots

Memory soldered to systemboard, no slots, dual-channel

Max Memory

16GB soldered memory, not upgradable

Storage

1TB SSD M.2 2280 PCIe® 3.0x4 NVMe®

Storage Support

One drive, up to 512GB M.2 2242 SSD or 1TB M.2 2280 SSD

Card Reader

4-in-1 Card Reader

Optical

None

Audio Chip

High Definition (HD) Audio, Realtek® ALC3287 codec

Speakers

Stereo speakers, 2W x2, optimized with Dolby® Atmos®

Camera

HD 720p + IR, ToF Sensor

Microphone

2x, Array

Battery

Integrated 75Wh

Max Battery Life

MobileMark® 2018@200nits: 10 hr

Local video (1080p) playback@150nits: 18 hr

Power Adapter

95W USB-C® (3-pin)

DESIGN

Display

16" 2.5K (2560x1600) IPS 350nits Anti-glare, 100% sRGB, 120Hz, TÜV Low Blue Light

Touchscreen

None

Keyboard

Backlit, Arabic

Case Color

Storm Grey

Surface Treatment

Aluminium Stamping (Anodized)

Case Material

Aluminium (Top), Aluminium (Bottom)

Dimensions (WxDxH)

356 x 251 x 16.9 mm (14.02 x 9.88 x 0.67 inches)

Weight

Around 1.9 kg (4.19 lbs)

SOFTWARE

Operating System

None

Bundled Software

None

CONNECTIVITY

Ethernet

No Onboard Ethernet

WLAN + Bluetooth®

Wi-Fi® 6, 11ax 2x2 + BT5.1

Standard Ports

- 1x USB 3.2 Gen 1
- 1x USB 3.2 Gen 1 (Always On)
- 1x USB-C 2.0 (support data transfer and Power Delivery 3.0)
- 1x Thunderbolt™ 4 (support data transfer, Power Delivery 3.0 and DisplayPort™ 1.4)
- 1x HDMI® 1.4b
- 1x Card reader
- 1x Headphone / microphone combo jack (3.5mm)

SECURITY & PRIVACY

Security Chip

Firmware TPM 2.0

Fingerprint Reader

None

Other Security

IR camera for Windows® Hello

SERVICE

Base Warranty

1-year, Courier or Carry-in

Included Upgrade

2Y Courier/Carry-in upgrade from 1Y Courier/Carry-in (5WS0K75720)

CERTIFICATIONS

Green Certifications

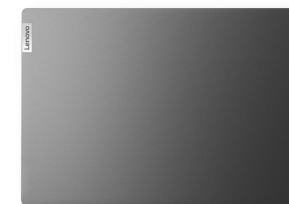
- ENERGY STAR® 8.0
- ErP Lot 3
- RoHS compliant

Other Certifications

- Eyesafe® Certified
- TÜV Rheinland® Low Blue Light (Hardware Solution)

MODEL

TopSeller	: Yes	Announce Date	: 2021-02-05
EAN / UPC / JAN	: 195713584401	End of Support	: 2027-05-09



intel

Premium Care - Advanced Support from Real People. Real Fast.



REAL PERSON

Choose how you want to reach us - through the phone, chat or email - our expert technicians will take care of you.



REAL FAST

Highly trained technicians will provide you real-time solutions, whatever the issue, on your first contact. If needed, our team will schedule an onsite visit for the next business day.



HASSLE FREE

'Getting started' and 'how-to' assistance for hardware and software. Easy solutions that are simple to reach - that's how Premium Care delivers you the ideal support experience.



PC HEALTH CHECK

Free annual PC Health Check that allows our experts to spot issues before you do so they can resolve them quickly and help you avoid PC problems.

Accidental Damage Protection - Protection of your PC from the unexpected.

Experience shows that a significant portion of devices may be damaged (and not covered under warranty) in the first three years. Lenovo's Accidental Damage Protection service covers accidents beyond the system warranty such as drops, spills, bumps and even electrical surges. Make sure your new device has maximum protection, avoid unplanned costs and get peace of mind.

Base Warranty – Included with the systems you purchase, default 1- or 3-year coverage window.

Warranty Extensions & Upgrades – Service and protection that's right for your circumstances.

- Pick Up & Return Courier
- Onsite Support
- Technician Installed Customer
- Replaceable Unit Service
- International Warranty Upgrade

Lenovo may not offer the products, services or features discussed in this document in all regions. Lenovo may withdraw an offering at any time. Consult your local representative for information on offerings available in your area. Lenovo reserves the right to change specifications or other product information without notice. Lenovo is not responsible for photographic or typographical errors. Lenovo provides this publication "as is" without warranty of any kind, either express or implied, including the implied warranties of merchantability or fitness for a particular purpose.

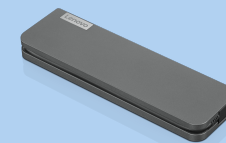
Recommended Accessories



ThinkPad Hybrid USB-C with USB-A Dock (American Standard Plug Type B)

40AF0135US

The ThinkPad Hybrid USB-C with USB-A Dock expands the capabilities of most any laptop, new or old, making it perfect for enterprise customers with mixed-PC or shared-desk environments. Featuring enterprise-class manag...



Lenovo USB-C Mini Dock_US

40AU0065US

Expand Your Potential with An Universal Mini Dock; Lenovo understands that modern business depends on a wide variety of PC's and even brands to meet their business needs. To make this easier Lenovo USB-C Mini dock is ...

For a full list of accessories and services, please visit:
<https://smartfind.Lenovo.com>

Lenovo

PSREF
Product Specifications
Reference